



**NORMA**  
*de Durville*  
PROFESSIONNEL

BROCHURE **2025**

PROFESSIONAL DEPILATORY WAX



FABRIQUÉ  
À LIMOGES

**Norma de Durville** was created in **1992** by **Laboratoire de Cosmétique Moderne**, a pioneer in the field of **depilatory waxing** since **1965**. We manufacture and package **high quality technical depilatory waxes** in the heart of France, in Limoges.

Our **demanding purchasing department** constantly improves **the quality of our raw materials** to meet world standards.

Our brand is supported by a **Research & Development department** made up of **experts in formulation, regulation and aesthetics**, in the fields of **depilatories and skincare products**.

Our various waxes and skincare products have been meticulously **designed for almost 60 years**. Finally, our products have conquered numerous markets, from **overseas departments to international markets**.



# *contents*

<b>OUR DEPILATORY WAXES</b> -----	4
STRIPLESS WAX-----	5
RECYCLABLE WAX-----	12
RESIN WAX-----	16
<b>OUR NATURAL AND ORGANIC PRODUCTS</b> -----	22
WAXES-----	23
OILS-----	26
<b>FACIAL BLEACHING</b> -----	28
<b>OUR CARE</b> -----	31
PRE-DEPILATORY CARE-----	32
POST-DEPILATORY CARE-----	37
MODELLING CARE-----	41
BEAUTY MASKS-----	45
CREAMS, MILKS AND LOTIONS-----	48
<b>OTHER PRODUCTS</b> -----	51
NAIL POLISH REMOVER-----	52
CLEANING SOLUTIONS-----	53
SOLVENTS-----	54
ACCESSORIES-----	56
<b>THE PARENT COMPANY</b> -----	58
LE LABORATOIRE DE COSMÉTOLOGIE MODERNE-----	58
<b>GENERAL TERMS AND CONDITIONS OF SALE</b> -----	59



**OUR**  
*depilatory waxes*

# STRIPLESS *wax*

Stripless waxes are recommended for waxing small areas such as the bikini line, face and underarms.

## How to use Stripless wax

- 1. Heating the wax:** Heat the wax to around 55°C in a suitable appliance. Make sure the wax reaches a consistency similar to that of very thick honey.
  - 2. Temperature test:** Before any application, carry out a temperature test on a small area of your skin and that of your client to avoid burns.
  - 3. Applying the wax:** Use a disposable spatula to apply a thin layer of wax to the area to be depilated. Spread the wax in the direction of hair growth. Use the rounded edge of the spatula to form a thicker border around the edge of the strip to prevent residue or strip breakage.
  - 4. Removing the wax:** Allow the wax to rest for approximately ten seconds so that it adheres sufficiently to the hairs. Remove the wax strip with a quick, firm movement in the opposite direction to hair growth, keeping the strip parallel to the surface of the skin. Repeat the process of applying and removing the wax until you have completely removed the hair from the desired area.
- Important:** the wax hardens almost instantly on contact with the skin.



OUR DEPILATORY WAXES

# STRIPLESS *wax*



**Stripless wax  
Extra-fine - Beads**  
Ref. 5511 - 1 kg bag



**Stripless wax  
Extra-fine**  
Ref. 5408 - 800 ml pot

It is a pine resin-based wax of natural origin. Its formula gives it extraordinary flexibility and plasticity. It can be used to make very thin strips.



**Stripless wax  
Extra-fine - Beads**  
Ref. 7798 - 800g box



OUR DEPILATORY WAXES

# STRIPLLESS wax



## Stripless wax Blackcurrant fragrance & orchid extract Beads Ref. 7799 - 800g box

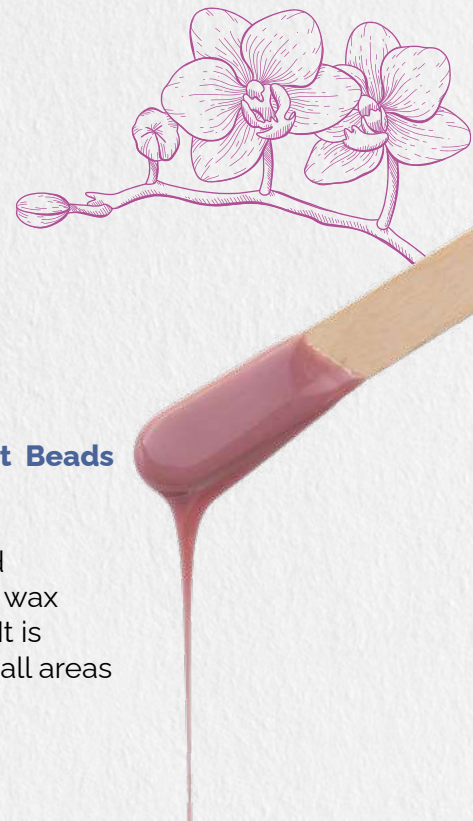
A Stripless wax with a creamy texture and blackcurrant-scented orchid extract. This wax contains beeswax, making it very gentle. It is particularly recommended for waxing small areas (bikini line and underarms).



ROSIN-FREE

## Stripless wax Rosin-free Ref. 7832 - 800 ml pot

This rosin-, fragrance- and dye-free peelable wax is particularly suitable for the most delicate skin types.



OUR DEPILATORY WAXES

# STRIPLESS *wax*



**Stripless wax**  
**Blue color**  
Ref. 5342 - 800 ml pot

This blue Stripless wax can be applied in very thin strips thanks to its elasticity and suppleness. Ideal for small areas (bikini line, underarms, etc.), it is enhanced with shea butter.



**Stripless wax**  
**Citrus fragrance**  
Ref. 5684 - 800 ml pot

Its sunny fragrance of typical Mediterranean citrus gives your salon a feeling of eternal spring.





OUR DEPILATORY WAXES

ROSIN-FREE

# STRIPLLESS *wax*

**Stripless wax**  
**Rosin-free**  
**With calendula extract**  
*Ref. 7817 - 800g box*

This stripless wax is particularly suitable for the most delicate skin types. Its delicious vanilla biscuit fragrance will delight your customers.



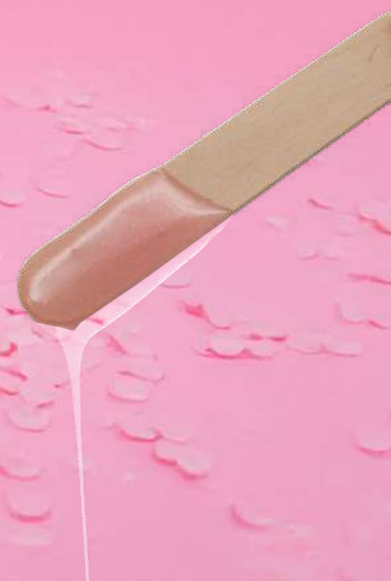
OUR DEPILATORY WAXES

# STRIPLESS *wax*

ROSIN-FREE

**Stripless wax**  
**Rosin-free**  
**Jasmine peony fragrance**  
*Ref. 9509 - 800g box*

A pink wax with glitter and a floral fragrance of jasmine and peony, all without rosin.



OUR DEPILATORY WAXES

# STRIPLLESS *wax*

MICROWAVEABLE



**Stripless wax**  
**Red berries fragrance**  
**Microwaveable**  
*Ref. 9659 - Cassolette 100 g*

This Stripless wax, with its delicious red fruit scent, is particularly suitable for waxing small areas of the face and body. Thanks to its original microwavable case and single-dose presentation, waxing is easy to set up in any cabin. 90 seconds in the microwave.



# RECYCLABLE *wax*

Recyclable waxes are non-strip waxes and are particularly suitable for intensive use in beauty salons.

## HOW TO USE RECYCLABLE WAX

- 1. Heating and recycling the wax:** heat the wax to around 55°C using a double-tank appliance designed specifically for this purpose. Use the appliance's second tank to filter the wax to remove impurities.
- 2. Temperature test:** before any application, carry out a temperature test on a small area of your skin and that of your client to avoid burns.
- 3. Applying the wax:** once the wax has become creamy, use a suitable spatula to apply a thick layer of wax to the area to be depilated. Spread the wax in the direction of hair growth. Use the rounded edge of the spatula to form a thicker border around the edge of the strip to prevent residue or strip breakage.
- 4. Removing the wax:** wait until the wax strip is no longer sticky to the touch. Remove the wax strip with a quick, firm movement in the opposite direction to hair growth, keeping the strip parallel to the surface of the skin. Repeat the process of applying and removing the wax until you have completely removed the hair from the desired area.



OUR DEPILATORY WAXES

# RECYCLABLE *wax*



**Recyclable wax**  
**Magnolia fragrance - Beads**  
*Ref. 7796 - 800g box*

This recyclable wax is delicately scented with magnolia. It is applied in a thinner layer than our other recyclable waxes.

OUR DEPILATORY WAXES

# RECYCLABLE *wax*

**Recyclable wax**  
**Blond colour - Beads**  
*Ref. 5564 - 1 kg bag*



Its great flexibility ensures a neat result and prevents hair hair breakage. Thanks to its pain-free plucking technique, it makes hair removal more effective, especially for Stripless hair and difficult to remove.



**Recyclable wax**  
**with pine phytosterols - Beads**  
*Ref. 7795 - 800g box*

This highly technical wax ensures maximum comfort during waxing, retains its beautiful green colour, stays flexible for a long time and doesn't break.



OUR DEPILATORY WAXES

# RECYCLABLE *wax*

**Recyclable wax**  
**Pink colour - Beads**  
*Ref. 5524 - 1 kg bag*

Its great flexibility means you can achieve a neat result and prevents hair breakage.  
Thanks to its pain-free removal technique, it makes hair removal even more effective, especially for stripless, difficult-to-remove hairs.



**Recyclable wax**  
**Pink colour - Beads**  
*Ref. 7794 - 800g box*

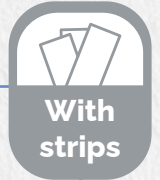


# RESIN *wax*

Resin wax is applied in very thin layers and removed with strips of non-woven paper. Resin is a natural ingredient, the colour of the wax may vary depending on the crop.

## HOW TO USE RESIN WAX

- 1. Heating the wax :** *preheat the wax to 55°C to ensure a fluid consistency.*
- 2. Applying the wax :** *dip the spatula into the depilatory wax, wipe down one side on the rim of the pot, then place the spatula perpendicular to the surface to be depilated. Then spread the wax in the same direction as the hair growth in a very thin layer, covering the entire area to be depilated evenly.*
- 3. Using muslin strips :** *apply a muslin strip to the wax and quickly remove it in the opposite direction to hair growth.*
- 4. Repeat application :** *repeat the process with the same strip until saturation, then use a new strip if necessary.*
- 5. Post-waxing treatment :** *apply post-waxing oil to remove wax residue.*





## OUR DEPILATORY WAXES

# RESIN *wax*

**Resin wax**  
**With pine phytosterols**  
*Ref. 5532 - 800 ml pot*

Disposable green resin wax, very gentle for the skin. It gently removes hair by its root.



**Resin wax**  
**With pine phytosterols**  
*Ref. 5554 - 100 ml Cartridge*



# RESIN *wax*



## Resin wax Pearly magnolia fragrance Ref. 5517 - 800 ml pot

This resin wax offers incomparable depilatory quality. Its floral magnolia fragrance will leave your salon feeling fresh and invigorating.



## Resin wax Pearly honey fragrance Ref. 5431 - 800 ml pot

Single-use Resin wax designed for all skin types. It gently removes hair with its root. A variation on the magnolia pearly resin wax, this one offers an olfactory alternative with its gentle honey fragrance with its gentle honey fragrance.



OUR DEPILATORY WAXES

# RESIN *wax*

**Resin wax**

**Blond colour Honey fragrance**

*Ref. 5513 - 800 ml pot*

Single-use resin wax with a honey colour and scent, designed for all skin types. It gently removes hair by its root.



**Resin wax**

**Blond colour Honey fragrance**

*Ref. 5514 - 100 ml Cartridge*



OUR DEPILATORY WAXES

**RESIN**

*wax*

Resin wax  
Rosin-free  
With calendula extract  
Ref. 7698 - 100 ml Cartridge

**ROSIN-FREE**

Wax with calendula extract, the perfect wax for small areas like the bikini line and underarms.





OUR NATURAL & ORGANIC  
*products*

OUR

*depilatory waxes*



# OUR *depilatory waxes*

**100% Natural origin resin wax**  
**CERTIFIED ORGANIC BY ECOCERT**  
*Ref. 7812 - 800 ml pot*

Wax made from beeswax and rapeseed oil.  
This certified organic wax meets all the depilatory requirements of conventional waxes. It is certified organic by Ecocert France.



**100% Natural origin stripless wax**  
**Beads**  
**CERTIFIED ORGANIC BY ECOCERT**  
*Ref. 7985 - 800g box*

This Ecocert-certified organic stripless wax is formulated with natural pine resin.  
Removal is strip-free.





OUR NATURAL & ORGANIC PRODUCTS

# OUR *depilatory waxes*

**100% Natural origin resin wax**  
*Ref. 7897 - 100 ml Cartridge*

Wax made from beeswax and rapeseed oil. This wax is similar to the certified organic Resin wax reference 7812, but its cartridge packaging does not allow us to use the Ecocert label.



NATURAL & ORGANIC  
*oils*



# OILS

**100% Natural post-depilatory oil**  
**CERTIFIED ORGANIC BY ECOCERT**  
 Ref. 7906 - 1L bottle

Apply the oil after waxing to remove any residue of wax.



**Modelling oil**  
**100% natural & vegetable origin**  
**No added fragrance**  
 Ref. 7899 - 1L bottle

This modelling oil is ideal for getting back into shape or for a moment of relaxation and well-being. It is formulated with vegetable oils (sweet almond oil, grape seed oil, etc.). No added fragrance.





**FACE**  
*bleaching*

# FACE *bleaching*

Not all unwanted hair needs to be removed, and in some cases simple bleaching is all that's needed. The formula we've developed will give you complete satisfaction.



## **Bleaching cream**

### **Model for sale**

*Ref. 5350 - 2 tubes of 30ml each*

Its gentle, effective formula helps reduce the visibility of facial hair. Give your face a glow by removing unwanted hair without plucking, for radiant, confident skin.

# FACE *bleaching*

## Bleaching cream

### Cab model

Ref. 5341 - 2 tubes of 150ml each

Its gentle, effective formula helps reduce facial hair.

Give your customers a touch of light by eliminating unwanted hair without depilation.



OUR  
*care*





**PRE-DEPILATORY**

*care*



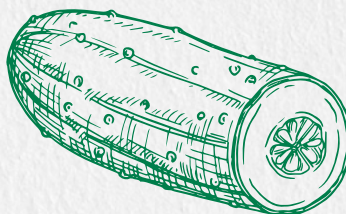
# PRE-DEPILATORY

*care*

## Organic sugar scrub With cucumber extract

Ref. 5003 - 400g jar

Eliminates dead cells to reveal radiant skin.  
Contains 72.2% organic sugar.



## Pre-depilatory lotion With peppermint essential oil

Ref. 8027 - 100 ml bottle

Before waxing, apply the lotion with peppermint essential oil using a cotton pad to the area to be waxed. Suitable for all areas.

OUR CARE

# PRE-DEPILATORY *care*

Sugar gel scrub  
Jasmine peony fragrance  
Ref. 9680 - 400g jar



Its silky gel texture, combined with slowly melting sugar particles, provides gentle exfoliation with the delicate scent of jasmine and peony. Its mechanical action frees the skin of impurities.

OUR CARE

# PRE-DEPILATORY *care*



**Sugar gel scrub**  
**With calendula extract**  
*Ref. 9681 - 400g jar*

The fusion between the gel texture, sugar and calendula provides gentle exfoliation. Its mechanical action frees the skin of impurities.



OUR CARE

# PRE-DEPILATORY *care*



## **Exfoliating cream Pink guava**

*Ref. 6263/F1489V5 - 500ml bottle*

This cream uses mechanical exfoliation to eliminate dead cells and stimulate the skin. 97% of ingredients are of natural origin.



OUR CARE

# PRE-DEPILATORY *care*



**Exfoliating cream with horsetail extract**

*Ref. 5770 - 400g jar*

Its specific formula contains horsetail hydrolysate. This cream is particle-free. It eliminates dead cells and impurities, leaving the skin Resin.

# POST-DEPILATORY

*care*



# POST-DEPILATORY

## *care*



### **EPI-LOTION with AHA & BHA**

*Ref. 6306 - 100 ml bottle*

After waxing, apply EPI-LOTION with a cotton pad over the waxed area. Ideal for small areas such as the bikini line and underarms.

### **Post-depilatory milk** **Guava cotton fragrance**

*Ref. 6311 - 150ml tube*

This milk contains a patented active ingredient rich in nordihydroguaiaretic acid with anti-proliferative properties. This active ingredient slows hair regrowth.

In vivo tests have shown that, after waxing the legs, applying a lotion containing this 3% active ingredient twice a day for 28 days has a moderating effect on hair growth, with 35% less hair.



# POST-DEPILATORY

care

**100% Natural post-depilatory oil**  
**CERTIFIED ORGANIC BY ECOCERT**

Ref. 7906 - 1L bottle

Apply the oil after waxing to remove any residue of wax.



**Post-depilatory oil**  
**Colourless**

Ref. 5279 - 1L bottle

This post-depilatory oil has no added colour or fragrance. It is applied after Resin waxing to remove any remaining wax.







**Post-depilatory oil  
With calendula extract**  
Ref. 6127 - 1L bottle

This very light, gentle oil is made from calendula flower extract and sweet almond oil. It gently removes any wax residue.



Ref. 6314 - 250ml bottle





**MODELLING**

*care*

OUR CARE

# MODELLING

*care*



**Modelling oil**  
**100% natural and vegetable origin**  
*Ref. 7899 - 1L bottle*

Formulated with sweet almond, grapeseed and rapeseed vegetable oils. 100% natural and vegetable origin. No added fragrance.



**Modelling oil**  
**Citrus fragrance**  
*Ref. 1331 - 1L bottle*

Body modelling oil with a citrus fragrance.  
Formulated with tea leaf extract and corn oil.



# MODELLING

*care*



## Modelling oil With sweet almond and jojoba oils

Ref. 5741 - 1L bottle

Formulated with sweet almond and jojoba vegetable oils.



## Modelling oil With chamomile extract

Ref. 1330 - 1L bottle

Body modelling oil formulated with chamomile flower extract, chamomile oil and corn oil.



**Pink guava modelling cream**  
**Arsène Valère**

*Ref. 1666/F1666V3/CCV2 - 500ml bottle*

The gliding power of this cream makes it ideal for prolonged sculpting treatments on the face or body.



*Arsène Valère*

LE LABORATOIRE DE COSMÉTOLOGIE MODERNE



**BEAUTY**  
*masks*



**97%**  
d'ingrédients  
d'origine  
naturelle

**Beauty mask**  
**With white kaolin clay**  
Ref. 1539 - 400g jar



**No  
added  
color**

This beauty mask is rich in white clay kaolin clay. This treatment contains 97% ingredients of natural origin.

**Beauty mask**  
**With aloe vera extract**

*Ref. 1544 - 400g jar*

This beauty mask contains aloe vera  
and jojoba oil.  
It is also rich in kaolin.







**Pink guava beauty mask**

**Arsène Valère**

*Ref. 1616/F1563V5 - 500ml bottle*

Mask with a fresh gel texture containing pink guava extract. 87% ingredients of natural origin.

**CREAMS, MILKS**

*and lotions*





**Pink Guava Day Cream**  
**Arsène Valère**

*Ref. 1663/F1346V5 - 100 ml bottle*

Day cream containing pink guava extract. 87% of ingredients of natural origin.

**Pink Guava Day Cream**  
**Arsène Valère**

*Ref. 1663 - 400g jar*

It contains extracts of pink guava and moringa seeds. Your skin is covered in a protective film,





## **Pink guava cleansing lotion** **Arsène Valère**

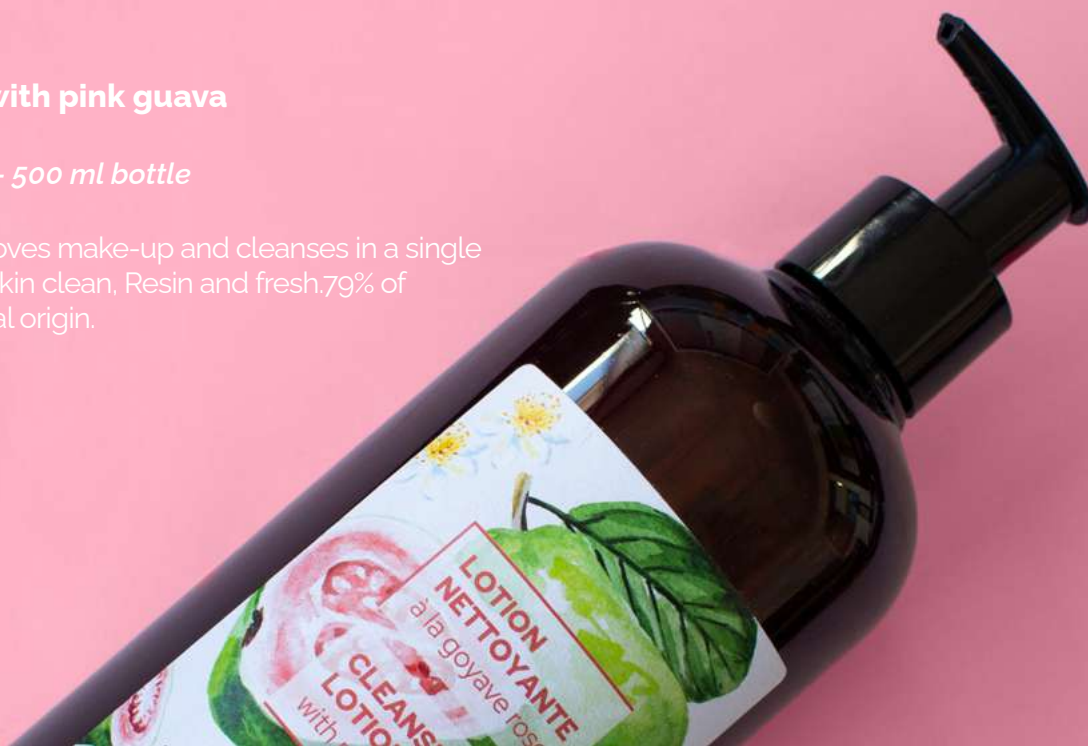
*Ref. 1163/F1163V1 - Bottle de 500 ml*

Use morning and night to rid the skin of impurities. Contains pink guava extract. 98% of ingredients of natural origin.

## **Cleansing milk with pink guava** **Arsène Valère**

*Ref. 1152/F1152V5 - 500 ml bottle*

Its fluid texture removes make-up and cleanses in a single step. It leaves your skin clean, Resin and fresh. 79% of ingredients of natural origin.





# OTHER *products*

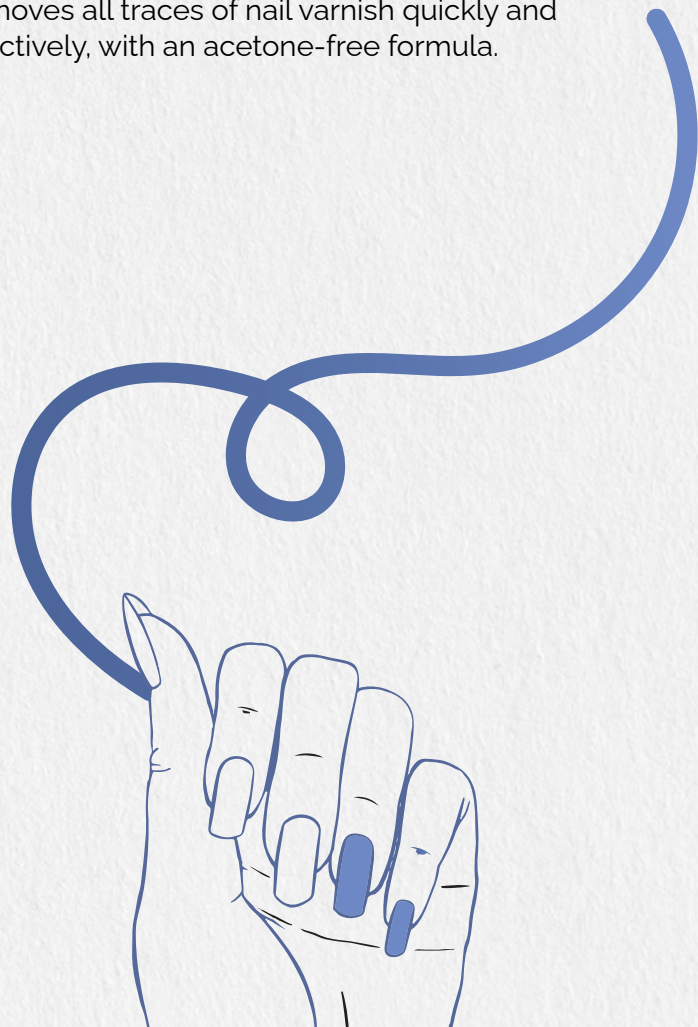
# NAIL POLISH REMOVER



## Acetone-free nail polish remover Arsène Valère

Ref. 5221 - 1L bottle

Removes all traces of nail varnish quickly and effectively, with an acetone-free formula.



# CLEANING

*solutions*

## Cleaning solutions Magnolia fragrance Ref. 5275 - 1L bottle

Solution designed to clean depilatory equipment (spatulas and surfaces).



## Cleaning solutions With calendula extract Ref. 6217 - 1L bottle

Solution designed to clean depilatory equipment (spatulas and surfaces).



# SOLVENTS

**Wax solvent  
Citrus fragrance**  
*Ref. 5285 - 1L bottle*

This magnolia-scented solvent is designed to clean wax appliances such as pot heaters and cartridge heaters.

**Wax solvent  
Magnolia fragrance**  
*Ref. 5284 - 1L bottle*

This magnolia-scented solvent is designed to clean wax appliances such as pot heaters and cartridge heaters.

**Wax solvent  
Magnolia fragrance**  
*Ref. 5288 - 5L bottle*





# SOLVENTS

**Wax solvent**  
**Parfum à l'extrait de calendula**  
*Ref. 6218 - 1L bottle*

This solvent with calendula extract is designed to clean wax appliances such as pot heaters and cartridge heaters.



**Wax solvent**  
**Fragrance with calendula extract**  
*Ref. 6315 - 250ml bottle*



# ACCESSORIES



## Examination sheet roll

*Ref. LEN2001*

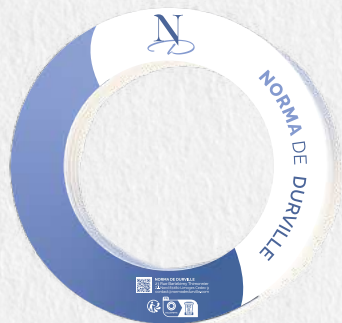
Width 50 cm - Length 50 metres  
Minimum order 72 rolls.



## Empty pot

*Ref. POT - 800 ml pot*

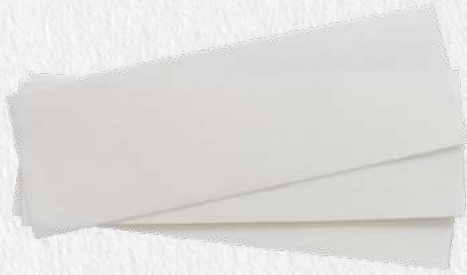
800 ml empty pot for melting wax beads.



## Cleaning collars

*Ref. ND00925 - Pack of 20 collars*

Prevents wax from running between the sides of the appliance and the pot.



**New generation non-woven stripes**

*Ref. ND00003 - Pack of 250 strips*

Made in France, strips free of hazardous substances and formaldehyde and 100% FSC - recycled fibres.



**Wax heater for 800 ml pot**

*Ref. Chauffe1*



**Wax heater for 100ml cartridge with thermostat**

*Ref. Thermo*



**Wooden spatula 130x20x2 mm**

*Ref. 11075100 - Bag of 100 spatulas*

**Wooden spatula 200x25x2 mm**

*Ref. 1109S100 - Bag of 50 spatulas*

**L·C·M**

LABORATOIRE  
de cosmétologie  
 moderne

Based in the heart of **Limoges, France**, our company benefits from **years of experience** in manufacturing high-quality **skincare products** (face and body) and **depilatory waxes** for **beauty professionals**.

Since 1965, we've been cultivating unique expertise, using quality ingredients and strict manufacturing processes to offer our customers exceptional cosmetic products.

We are constantly looking for **solutions** to meet the changing needs of our time: **natural, organic, vegan products...** **From development to manufacturing and packaging**, our factory delivers a complete product.

We also manufacture for brands all over the world, guaranteeing our partners impeccable quality. **We export** our products to destinations as diverse as **Europe, Morocco, Mexico, Canada, England and beyond**. Our commitment to quality, innovation and sustainability has won our products the hearts of customers in every corner of the globe.

# L.C.M

LABORATOIRE  
de cosmétologie  
moderne

NORMA  
*de Durville*

*Arsène Valère*  
LE LABORATOIRE DE COSMÉTOLOGIE MODERNE

## GENERAL SALES TERMS AND CONDITIONS

### Article 1 – Application

These general sales terms and conditions apply to all sales of products and services by the L.C.M. company, under its L.C.M., Norma de Durville and Arsène Valère trademarks, and all other products manufactured by us under our own trademark, unless a specific agreement prior to the order has been agreed in writing between the parties. They also apply to any future business relationship without being explicitly mentioned. Consequently, any order placed with L.C.M. implies acceptance of our general sales terms and conditions below, as well as our special sales terms and conditions. No Acknowledgement of Receipt of Order shall constitute a waiver of any of the clauses below.

### Article 2 – Orders

All orders are deemed final once they have been accepted and confirmed in writing by our company. No cancellation or modification of an order will be possible unless accepted by us. In all cases, the purchaser undertakes to accept delivery of all the quantities produced before the order is modified or cancelled.

The delivery of the products naturally includes a variance of +/- 5% of the total order, due to production constraints, without there being any harmful consequences for L.C.M. or its customer: the products are paid for in the number of units received in either direction (+/-).

Differences within this tolerance at the time of delivery may not result in a final refusal of delivery and payment for the quantities manufactured. If the customer wishes, and after acceptance by the seller, L.C.M. may deliver a balance (with no additional carriage charge for the Buyer in Metropolitan France).

### Article 3 – Price

The prices indicated on our order confirmation, proforma or quotation are valid for 3 months from the date of issue, unless otherwise stated.

**Please note that the minimum order to benefit from these prices depends on your category:**

## Wholesalers

For «Wholesalers» €1,000 excluding VAT per month, with a minimum order of €500. For metropolitan France, **a fixed charge of €150 excluding VAT** will be **invoiced for each order below this amount.**

## Beauty salons

For «Beauty salons» €150 excluding VAT per order and per month. For metropolitan France, **a fixed charge of €35 excluding VAT** will be **invoiced for each order below this amount.**

## Home-based beauticians

For «Home-based beauticians» or «auto-entrepreneurs» (with proof of registration on Net Entreprise) €80 excluding VAT per order. For metropolitan France, **a fixed charge of €19 excluding VAT** will be **invoiced for each order below this amount.**

Outside Metropolitan France, transport and transit costs are at the buyer's expense.

Our prices are indicated exclusive of tax (HT), with 20% VAT added. The unit price list is available in the commercial documents sent to you: catalogues, price lists, quotations, order forms, etc. LCM reserves the right to modify prices at any time in the event of increases in raw materials, packaging and transport costs, currency fluctuations or typographical errors.

Any discount conditions are set exclusively by LCM.

## **Article 4 – Delivery - Transport – Risk transfer**

Our manufacturing lead times are given as an indication only and shall not entitle the purchaser to cancel the sale, to refuse the goods delivered or to claim damages.

Subject to stock availability, the minimum delivery time is five working days in Metropolitan France. This time is given as an indication.

The transfer of risks takes place as soon as the products are made available to the purchaser or as soon as they are delivered to a shipper/carrier responsible for delivery. However, for orders which refer to Incoterms, the transfer of risk takes place in accordance with the Incoterms in force.

It is the purchaser's responsibility to check the goods in the presence of the delivery person and to express precise reservations if necessary. The words «subject to unpacking» do not constitute a reservation and have NO LEGAL VALUE. It is therefore essential to describe precisely the state of the packaging and/or the product, and to characterise the damage precisely.

In the event of a complaint, the purchaser must send a registered letter with acknowledgement of receipt to the carrier within 48 hours. They must also, within 48 working hours, send an e-mail to [contact@normadedurville.com](mailto:contact@normadedurville.com) or a registered letter with acknowledgement of receipt to the following postal address: L.C.M. BP 1537, 87021 LIMOGES CEDEX 09.

After this period and/or without reservations on the carrier's delivery note, the delivery cannot be contested.

### **Article 5 – Payment**

Invoices must be paid on receipt, unless L.C.M has previously agreed to a specific method of payment when the order is expressly validated, within the time limits stipulated by the general rules of article [L441-10 of the French Commercial Code](#).

We remind you that in the case of payment by bill of exchange previously accepted, this document must be returned within 48 hours, as required by articles L110-1 to [L960-4 of the French Commercial Code](#).

In the case of customers who do not have a commercial history or who have had payment incidents on previous orders, our company reserves the right to require payment upon ordering. In the case of any company that is the subject of receivership proceedings, payment will be required at the time of order.

In the event of non-payment on the due date (the payment date shown on the invoice), a sum equal to 10% of the total amount of the invoice will be due by way of damages, in addition to late payment interest of 3 times the legal interest rate, which can be consulted on the website <https://www.legifrance.gouv.fr>, by way of [example for the first half of 2023](#), with a minimum of 3.5%, as well as any legal and/or amicable collection costs, including for professionals the fixed indemnity for collection costs provided for by [law no. 2012-387 of 22 March 2012 and set by application decree no. 2012-1115 of 2 October 2012](#) at €40, article D 441-5 of the French Commercial Code.

Furthermore, in the event of non-payment, we reserve the right to demand payment of all invoices due, even if they are not yet due.

We would also remind you that any intervention by our legal department is at the debtor's expense.

### **Article 6 – Reservation of ownership**

All products and accessories remain the property of L.C.M. until payment of the last instalment of the agreed price. Any clause to the contrary included in the General Purchase Terms and Conditions shall be deemed unwritten. However, all risks associated with the products shall be borne by the purchaser as soon as these risks have been transferred in accordance with article 5. The purchaser therefore undertakes to take out an insurance policy covering the risks of loss, destruction or theft of the products delivered.

### **Article 7 – Responsibility**

In the event of a manufacturing defect recognised by both parties, our liability is limited to the replacement of our defective products.

We shall not be held liable in the event of misuse of the products.

### **Article 8 – Liability waiver clause**

Our company's obligations shall be suspended automatically and without formality, and we shall not be liable, in the event of events such as : fire, labour stoppage of any kind, lock-out, flood, epidemic, war, requisition, riot, frost, shortage of raw materials, tooling accident, shortage of fuel or electrical power, interruption or delay in transport, impossibility or difficulty of import or export, impossibility due to regulations or administrative decisions, temporary outage of machinery or equipment

necessary for the execution of orders occurring in our premises, those of our suppliers or subcontractors, serious failure of our suppliers, political risk, catastrophic risk and risk of non-transfer, as well as any circumstance occurring after the conclusion of the contract and preventing execution under normal conditions by our company.

### Article 9 – Intellectual property - Copyright

Furthermore, L.C.M. never transfers, by any means whatsoever, any of the Intellectual Property rights attached to the products it markets. All product formulas manufactured by L.C.M, on its behalf or for its subcontractors under its own brand name, are the exclusive property of L.C.M and as such are protected by the Intellectual Property Code and copyright. The rules applicable in this respect are set out in [articles L111-1 to L811-6 of the Intellectual Property Code](#). Any clause to the contrary included in the General Purchase Terms and Conditions will not only be considered null and void but will also be considered prejudicial and will therefore trigger the payment of damages.

### Article 10 – Privacy policy

In accordance with the [law relating to data processing, data files and individual liberties of January 6th 1978](#), nominative information relating to purchasers may be processed automatically.

The information transmitted by the customer is for the exclusive use of L.C.M.

L.C.M. undertakes not to pass on to third parties the personal information that Internet users provide on its site. This information is confidential. In addition, the customer has the right to access, modify, rectify and delete data concerning him/her/they ([article 34 of the law of January 6th 1978](#)), which he/she/they may exercise by contacting L.C.M, RCS Limoges 305 709 438, located at 23 rue Barthélémy Thimonnier, BP 1537, 87021 LIMOGES CEDEX 09 or by e-mail at [internet@lcm-cosmetique.com](mailto:internet@lcm-cosmetique.com).

In accordance with the [French Data Protection Act no.78-17 of January 6th 1978](#) as amended, the L.C.M website has been registered with the “Commission Nationale de l’Informatique et des Libertés” under numbers: 998531 v 0, 1998532 v 0 and 1998533 v 0 dated 13/10/2016.

### Article 11 – Claims

Any question relating to these General Sales Terms and Conditions and to the sales governed by them, and not covered in these contractual stipulations, shall be governed by French law, to the exclusion of any other law and any rule of conflict of law. For any dispute relating to the execution of the sales contract or the payment of the price, as well as in the event of divergent interpretation of the above clauses and conditions, the Commercial Court of Limoges will have sole jurisdiction. However, L.C.M. reserves the right to summon the principal before any other court having jurisdiction under the rules of French civil procedure.

The nullity of a clause in these General Terms and Conditions or a regulation under another agreement shall not affect the validity of these General Terms and Conditions as a whole.

The applicable laws are French, Community and European laws.

In the event of a dispute, the Limoges Commercial Court shall have sole authority, as shall any courts with legal competence within the territorial jurisdiction of L.C.M.’s registered office.



## Article 12 – Language

The only official version of these General Sales Terms and Conditions, as well as all communications relating to the order form, will be in the French language.

## Article 13 – Modification of the General Terms and Conditions

The seller is free to amend the GTCs at any time, in accordance with the law.

## Appendix 1 – Legal warranties for sales to private individuals (excluding professionals)

L.C.M ARSENE VALERE guarantees that all products are manufactured in France.

In all cases, L.C.M ARSENE VALERE cannot be held responsible for non-compliance with regulations and laws in force in the country of receipt. The responsibility of L.C.M ARSENE VALERE is systematically limited to the value of the product in question, value at date of sale.

The customer benefits from the legal warranty of conformity ([articles 217-3 to L217-20 of the Consumer Code](#)) and the warranty of hidden defects ([articles 1641 to 1649 of the Civil Code](#)).

Any action arising from a lack of conformity must be brought within two years of delivery of the goods. The purchaser may choose between repairing or replacing the goods, subject to cost conditions ([articles L217-9 of the French Consumer Code](#)).

The legal warranty of conformity applies independently of any commercial warranty that may have been granted.

If art. 1641 of the Civil Code is applied, the consumer may choose between rescission of the sale or a reduction in the sale price in accordance with art. 1644 of the Civil Code.

## Appendix 2 – Additional information

UNIQUE REP IDENTIFICATION NUMBER (Extended Producer Responsibility) HOUSEHOLD PACKAGING: FR213230\_010TTB

Last updated on 05/01/2024 by Mr J. MOREAU in his capacity as CEO.